

Redeemer Lutheran School

2626 Liberty Blvd.
South Gate, CA 90280
Tel. (323) 588-0934 Fax (323) 588-0701
Ms. Bridget Valadez, Principal
www.Redeemersouthgate.org

Dear Parents,

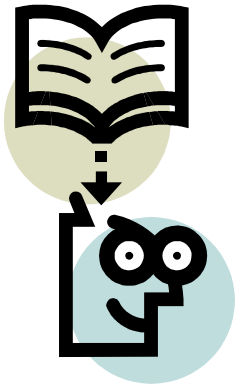
Here are some important things to keep in mind about Summer School:

- ☒ Summer Day Camp will be from June 22nd – July 24th
School will begin at 9:00 AM and end at 2:00 PM
- ☒ Day Care will be provided from 7:00 AM – 9:00 AM and
2:00 – 5:00 PM and will cost \$2.00 per hour. There will be an additional
charge of \$5 for every 15 minutes that a child is left after 5:00 p.m.
- ☒ Day care will be billed on a weekly basis
- ☒ Children must bring a sack lunch daily and they are allowed to wear
appropriate free dress (play clothes)
- ☒ We will be going on the following trips:
Friday, June 26th Knott's Berry Farm
Friday, July 3rd Discovery Science Center
Friday, July 10th Seaside Lagoon
Friday, July 17th Santa Fe Dam
Friday, July 24th Soak City

Field Trips are subject to change, but advance notice will be given.

Redeemer Lutheran School

2626 Liberty Blvd.
South Gate, CA 90280
Tel. (323) 588-0934 Fax (323) 588-0701
Ms. Bridget Valadez, Principal
www.Redeemersouthgate.org



Did you know... According to recent studies, many children lose an average of 2.6 months of grade-level equivalency in math skills over the summer and some studies show that students forget as much as 80 percent of what they were taught the previous year during the hot summer months.

What can you do to prevent this from happening to your child(ren)?

Redeemer has the answer for you! We are offering a five week Summer school program that begins on June 22nd and ends on July 24th. You can choose to send your child(ren) for academics only on Monday – Thursday or send them Monday – Friday so that they can enjoy the weekly field trips. **The best news is that our prices are the same as last year and we offer a family discount for siblings.**

The prices are:

Deluxe Enrollment (Five Field trips included)

- 1 Child - \$75.00 per week
- 2 Children - \$130.00 per week
- 3 Children - \$200.00 per week

Basic Enrollment (Academics only: Monday – Thursday)

- 1 Child - \$55.00 per week
- 2 Children - \$90.00 per week
- 3 Children - \$140.00 per week

Please keep in mind that you must pay a \$25 non-refundable deposit to hold your child's place. Please feel free to contact the school office if you have any questions.